



# SureSteel® Select

**TEN  
YEAR**  
MANUFACTURERS  
WARRANTY

**PATENT  
DRILL&LOCK**  
AUST P/NO. 2008202373  
NZ P/NO. 568738

**RATED  
R13**  
SLIP RESISTANCE FOR  
MAXIMUM SAFETY

**AS/NZS  
1428  
COMPLIANT**

**DESIGNER  
COLOUR  
RANGE**

**316  
MARINE GRADE**  
STAINLESS STEEL  
CERTIFIED

With the release of the SureSteel® Select range of tactiles, Architects and specifiers no longer need to compromise their carefully designed colour schemes. Bring spaces to life by introducing colour to tactile ground surface indicators.

CTA SureSteel® Select introduces colour to tactile ground surface indicators, without trading off the high levels of compliance, safety and durability of stainless steel. This provides a wider range of options for architects and specifiers. The aesthetic potential of SureSteel® Select is almost limitless.

When choosing SureSteel® Select, tactile indicators can be specified in one of two styles, both with a smooth side face:

- 316 stainless steel skirt with a coloured polymeric infill top surface
- Coloured skirt with a stainless steel top surface

Both provide the same industry leading patented R13 safety rating as

the full range of SureSteel® indicators and CTAs patented Drill&Lock® adhesive free installation.

## KEY FEATURES

- SureSteel® Select tactiles offer the same safety, compliance and installation options as the SureSteel® range
- Available in both hazard (stud) and directional (rib) profiles
- Available in 2 styles: either polymeric infill or skirt, with both styles available in 7 colours
- Patented Drill&Lock® installation – no glue required and can be walked on immediately after being fitted

## SureSteel® Select - add colour without compromising on quality

Coloured insert or sides - both styles are a single Stainless Steel piece (including spigot) to provide superior strength

Patented design element providing unique AS4586 R13 slip resistance  
Aust P/No. 2007101236 NZ P/No. 572592

316 Marine Grade Stainless Steel for appearance and durability

Patented Drill&Lock® fixing spigot - allowing fast, clean installation without adhesive and immediate use of the area

Meets all requirements of AS1428 design for access and mobility

Industry leading 10 Year Manufacturers Warranty

ISO guaranteed manufacturing process

### COMPLIANCE

All CTA products conform with the requirements of the Australian standards and are tested by NATA certified labs.

Please consult with CTA for relevant test reports:

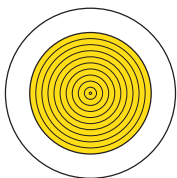
- AS1428:2009 Design for access and mobility
- AS4586:2013 Slip resistance classifications for new pedestrian surface materials
- NCC - National Construction Codes

### LUMINANCE CONTRAST

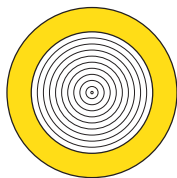
Please view the CTA Luminance Brochure for details or contact your CTA representative to discuss or request an onsite luminosity test.

### PRODUCT VARIATIONS

#### TOP FACE OPTIONS

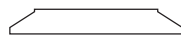


Polymer concentric ring top with Stainless Steel side



Stainless Steel concentric ring top with coloured poly side

#### SIDE FACE OPTIONS

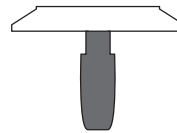


Stainless Steel smooth side face



Coloured poly smooth side face

#### FIXING SYSTEM



Patented Drill&Lock® (Mechanical Retention)

### WARRANTY

CTA provides a comprehensive warranty, in accordance with our published warranty statement which can be viewed on [cobbletac.com](http://cobbletac.com).

### CTA COMPLETE CARE MAINTENANCE

Asset owners have a Duty of Care responsibility to maintain access product within design performance parameters. CTA offers a fully integrated maintenance program which includes regular scheduled maintenance and replacement of worn components where necessary. Please contact your CTA representative for information on our "Complete Care Program."

### CTA INSTALLERS

CTA's accredited installers are available to do the installation work for you - with short turnaround times and guaranteed workmanship. Our installation team is the largest and most experienced in the nation, so you can rest assured you are in safe hands.

### MORE INFORMATION

Product Installation, list of Approved Products and Material Safety Data Sheets are available on request.

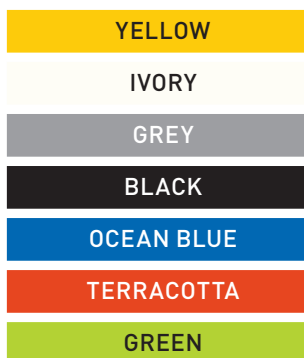
### MATERIAL

316 marine grade stainless steel with either a coloured polymeric infill or side.

### DIMENSIONS

A major diameter of 35mm, a minor diameter of 25mm with a protrusion height of 5mm.

### COLOURS



### APPLICATIONS

- Can be used across all high volume traffic areas
- All types of substrate - tiles, concrete, carpet, stone, etc
- Suitable for internal and external applications

### INSTALLATION METHOD

SureSteel® Select tactile indicators are installed into holes in the substrate pre-drilled with a suitable masonry or wet core drill bit. Traditionally the insertion method also required an adhesive however CTA has developed, and patented, Drill&Lock® technology. This innovative approach eliminates the need for messy adhesives and makes do-it-yourself installation a viable option, reducing both cost and annoying delays. Drill&Lock® also allows the area to be opened to pedestrian traffic immediately after installation.

Drill&Lock® requires just two simple steps: drill a hole, and lock in a tactile indicator. Combining Drill&Lock® with CTA's complete range of interlocking installation templates will ensure that your installation is fully compliant with the relevant standards.

The exception is bitumen, due the weakness of the substrate it is suggested that polyurethane adhesive is used.

Installation of tactile indicators onto carpet can throw up unique challenges, so CTA has also developed the EasyAs® carpet installation system. This system drastically reduces the stress and cost associated with carpet installations.

**CALL CTA ON 1300 282 282**  
TO ARRANGE A MEETING WITH A SALES CONSULTANT

VICTORIA 1300 282 282 NEW SOUTH WALES 1300 282 679 QUEENSLAND 1300 282 753 WA 1300 282 282



### SURESTEEL® SELECT - HAZARD

Product Weight	29g	Materials	Stainless Steel
Packaging Size	460 x 165 x 135		Polymer
Quantity in Package	500	UV Stable	Yes
AS1428 Compliant	Yes	Warranty	10 Years
AS4586 - Wet Pendulum	55 / P5	Life Expectancy	25+ years
AS4586 - Oil-Wet Ramp	35.8° / R13	Indoor Use	Yes
NCC Compliant	Yes	Outdoor Use	Yes

### HAZARD OPTIONS - COLOURED INSERT



AU/NZ	SIDE FACE	TOP	FIXING SYSTEM	PRODUCT CODE
•	Stainless Steel	Ivory Poly	Drill&Lock® 20mm	CRPIS006-108
•	Stainless Steel	Yellow Poly	Drill&Lock® 20mm	CRPIS006-112
•	Stainless Steel	Terracotta Poly	Drill&Lock® 20mm	CRPIS006-124
•	Stainless Steel	Ocean Blue Poly	Drill&Lock® 20mm	CRPIS006-135
•	Stainless Steel	Green Poly	Drill&Lock® 20mm	CRPIS006-142
•	Stainless Steel	Grey Poly	Drill&Lock® 20mm	CRPIS006-155
•	Stainless Steel	Black Poly	Drill&Lock® 20mm	CRPIS006-160
•	Stainless Steel	Photo Luminescent	Drill&Lock® 20mm	CRPIS006-PL

### HAZARD OPTIONS - COLOURED SIDE

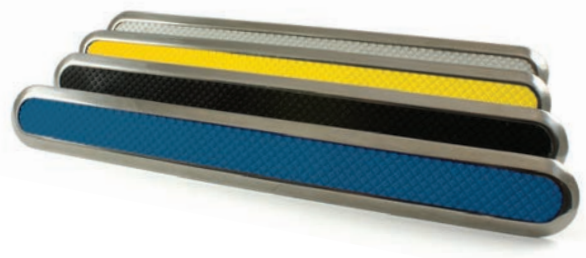


AU/NZ	SIDE FACE	TOP	FIXING SYSTEM	PRODUCT CODE
•	Ivory Poly	Stainless Steel	Drill&Lock® 20mm	CRPS007-108
•	Yellow Poly	Stainless Steel	Drill&Lock® 20mm	CRPS007-112
•	Terracotta Poly	Stainless Steel	Drill&Lock® 20mm	CRPS007-124
•	Ocean Blue Poly	Stainless Steel	Drill&Lock® 20mm	CRPS007-135
•	Green Poly	Stainless Steel	Drill&Lock® 20mm	CRPS007-142
•	Grey Poly	Stainless Steel	Drill&Lock® 20mm	CRPS007-155
•	Black Poly	Stainless Steel	Drill&Lock® 20mm	CRPS007-160
•	Photo Luminescent	Stainless Steel	Drill&Lock® 20mm	CRPS007-PL

### SURESTEEL® SELECT - DIRECTIONAL

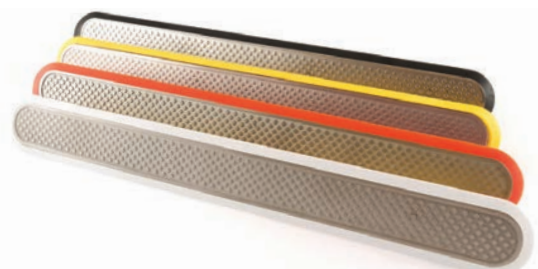
Product Weight	193g	Materials	Stainless Steel
Packaging Size	350 x 300 x 250		Polymer
Quantity in Package	50	UV Stable	Yes
AS1428 Compliant	Yes	Warranty	10 Years
AS4586 - Wet Pendulum	58 / P5	Life Expectancy	25+ years
AS4586 - Oil-Wet Ramp	29.2° / R12	Indoor Use	Yes
NCC Compliant	Yes	Outdoor Use	Yes

### DIRECTIONAL OPTIONS - COLOURED INSERT



AU/NZ	SIDE FACE	TOP	FIXING SYSTEM	PRODUCT CODE
•	Stainless Steel	Ivory Poly	Drill&Lock® 20mm	RCHPIS006-108
•	Stainless Steel	Yellow Poly	Drill&Lock® 20mm	RCHPIS006-112
•	Stainless Steel	Terracotta Poly	Drill&Lock® 20mm	RCHPIS006-124
•	Stainless Steel	Ocean Blue Poly	Drill&Lock® 20mm	RCHPIS006-135
•	Stainless Steel	Green Poly	Drill&Lock® 20mm	RCHPIS006-142
•	Stainless Steel	Grey Poly	Drill&Lock® 20mm	RCHPIS006-155
•	Stainless Steel	Black Poly	Drill&Lock® 20mm	RCHPIS006-160
•	Stainless Steel	Photo Luminescent	Drill&Lock® 20mm	RCHPIS006-PL

### DIRECTIONAL OPTIONS - COLOURED SIDE



AU/NZ	SIDE FACE	TOP	FIXING SYSTEM	PRODUCT CODE
•	Ivory Poly	Stainless Steel	Drill&Lock® 20mm	RCHPSS006-108
•	Yellow Poly	Stainless Steel	Drill&Lock® 20mm	RCHPSS006-112
•	Terracotta Poly	Stainless Steel	Drill&Lock® 20mm	RCHPSS006-124
•	Ocean Blue Poly	Stainless Steel	Drill&Lock® 20mm	RCHPSS006-135
•	Green Poly	Stainless Steel	Drill&Lock® 20mm	RCHPSS006-142
•	Grey Poly	Stainless Steel	Drill&Lock® 20mm	RCHPSS006-155
•	Black Poly	Stainless Steel	Drill&Lock® 20mm	RCHPSS006-160
•	Photo Luminescent	Stainless Steel	Drill&Lock® 20mm	RCHPSS006-PL

**CALL CTA ON 1300 282 282**  
**TO ARRANGE A MEETING WITH A SALES CONSULTANT**

VICTORIA 1300 282 282 NEW SOUTH WALES 1300 282 679 QUEENSLAND 1300 282 753 WA 1300 282 282



**CALL CTA ON 1300 282 282**  
TO ARRANGE A MEETING WITH A PRODUCT SPECIALIST



[WWW.CTAGROUP.COM.AU](http://WWW.CTAGROUP.COM.AU)